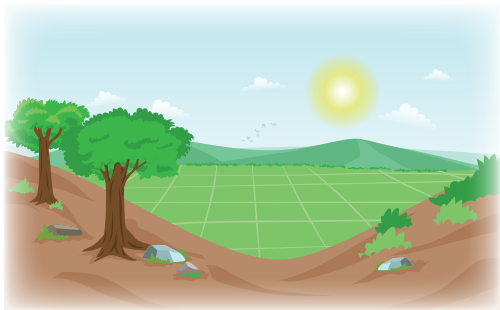
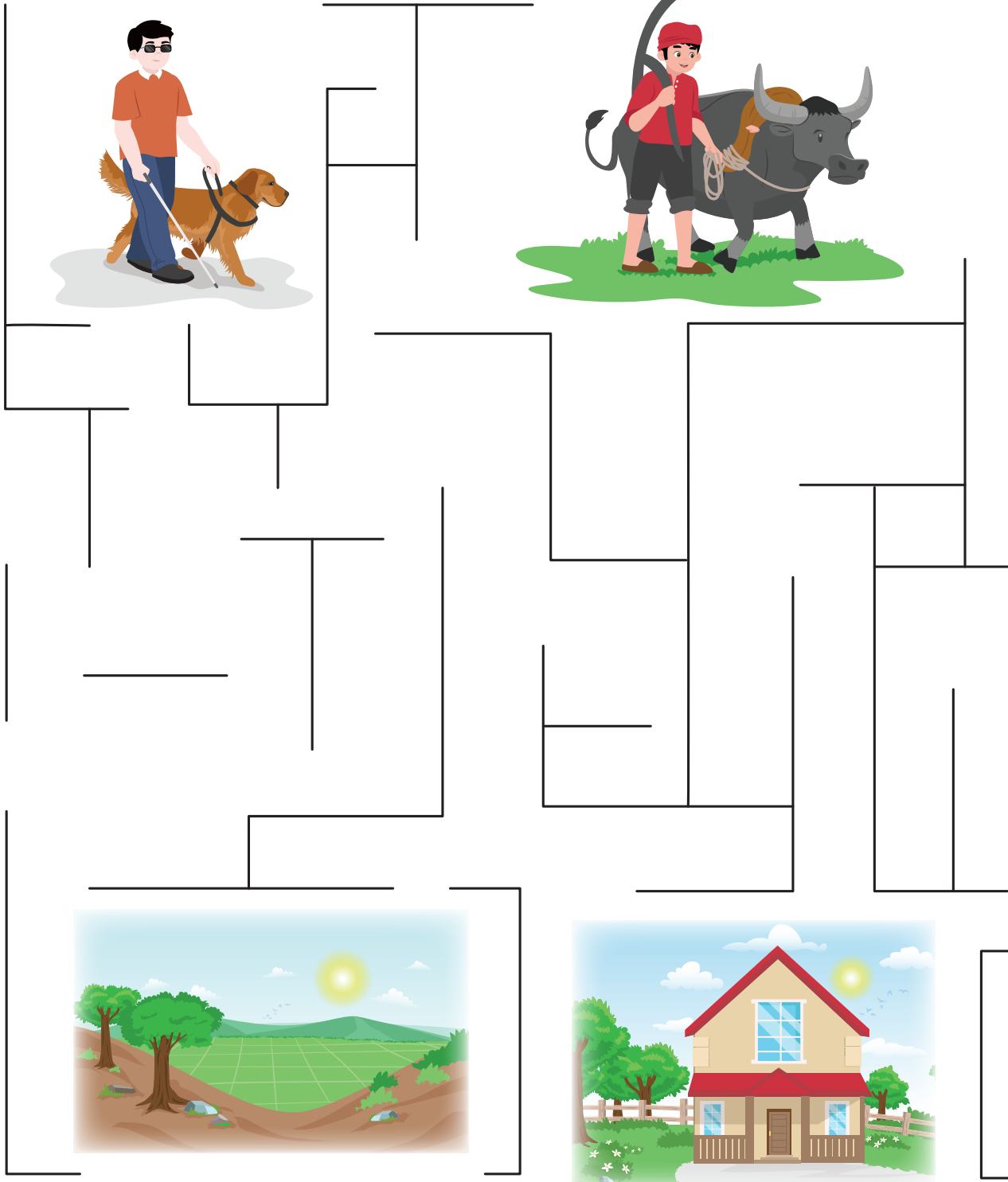


Let Us Try



B. Help the blind man get back to his home by coloring his path **blue**. Then help the farmer reach his fields by coloring his path **green**.



This page, or parts thereof, may not be reproduced or distributed in any form or by any other means, including photographic, electrostatic, mechanical, or any other method for any use, including information storage and retrieval, without prior written permission from the publisher